

43rd EDITION OF THE HISTORIC
"THYSIAS" CYCLING RACE

ENSURING THE SUSTAINABLE DEVELOPMENT OF LOCAL COMMUNITIES

enel
Green Power





The stone bridge next to the Katarraktis village, one of the most beautiful spots of this green route.



Wind park "Lithos" with an installed capacity of 18.9 MW.

The athletes of the Patras Cycling Club pose in front of our wind park "Lithos".
Left to right: Nikos Voukelatos, Dionysis Douzas and Markos Kordas.



Aristotelis Chantavas,
Head of Europe Area
at Enel Green Power

OUR RESPONSIBILITY FOR THE SUSTAINABLE DEVELOPMENT OF LOCAL COMMUNITIES

Dear friends,

At the end of May this year, we at [Enel Green Power](#) had the pleasure and honor to support the [43rd edition of the historic "Thysias" cycling race](#) in Kalavryta, near "Lithos", one of our 25 wind farms in Greece. This initiative is part of our corporate "Creating Shared Value" model, which aims to support sustainable development in the areas where we operate, and at the same time contribute to climate change mitigation by creating renewable projects. We actively support the economic and social development of local communities, while also protecting and enhancing local ecosystems. The meaningful integration of local communities

drives our business approach and is a key pillar of our global strategy, as we consider it as a prerequisite for a successful energy transition without social exclusion. That is why we at Enel Green Power talk about sustainable energy: we ensure that every step towards energy transition complies with sustainability. Since 2015, [Enel](#) as a Group, integrated the United Nation's Sustainable Development Goals with its own commitments against climate change and is the first in the world to launch a General-purpose, SDG-Linked bond on the capital market, a bond instrument linked to achieving sustainable goals.

THE COUNTRY'S ENERGY ALLY

Greece attempts to implement an ambitious plan for energy transition, as it has firstly been committed to coal decommissioning by 2023, and secondly to increase the RES share in the energy mix by 35%, adding 9.5GW RES, by 2030. Also, like all European Union member states that have signed the Green Deal, it must proceed to decarbonization across its economy, reduce CO2 emissions by at least 55% over the next decade and direct national and European resources towards sustainable investments.

Enel, since 2008, has been firmly supporting the country in achieving its energy goals, as part of its global strategy to produce carbon-free energy by 2030. With a presence in 31 different countries, it has acquired unrivaled expertise across the entire energy spectrum, from the development of networks to the implementation of major RES projects. In Greece, we have invested over 1 billion

euros, we have a total installed capacity of over 480MW from wind, solar and hydroelectric projects, and we continue to implement a solid development plan with new technologies that will accelerate the energy transformation of the domestic market.

Considering the rich and untapped wind and solar potential of Greece, we believe that it is feasible to immediately create an energy system having RES as the main source of energy. To this end, advanced storage technologies, which will lead to a reliable and stable national electricity system, in conjunction with wind and solar energy will be crucial. We are committed not only to make the country greener through planned RES projects, but also to further enhance the sustainable development of local communities. Integrated energy transition must include local communities in its plan — only then is it a genuine opportunity for development.



482 MW
total installed capacity

24

Prefectures

25

Wind
Parks

29

Photovoltaic
Parks

5

Small Hydros

FROM CORPORATE SOCIAL RESPONSIBILITY TO THE MODEL OF CREATING SHARED VALUE

There is no doubt that year after year there is a growing number of major social challenges. Companies have always contributed to the communities, starting with charitable activities to benefit worthy social causes. The communities' needs required the Corporate Social Responsibility (CSR) approach, but shortly, the concept of sustainability appeared, which gradually became the business value of the majority. Today, we have moved to the model of Creating Shared Value (CSV), integrating social development with the creation of economic value.

In 2013, Enel Green Power took on the challenge of developing solutions, tools, projects and concrete actions with the potential to integrate the concept of "Creating Shared Value" in all procedures and working methods in the value chain, in order to achieve tangible synergies between social and environmental sustainability and business objectives.

The company has adopted a development strategy that constantly implements sustainable actions and practices. Our approach is designed in a way to identify opportunities for the adaptation of the "Creating Shared Value" model in the local communities we operate.

Our actions are focused on a constant dialogue with stakeholders and are incorporated in detailed studies of socio-economic and environmental conditions, in order to effectively identify the measures that will meet the needs of the local community, while remaining in line with our corporate goals. The end result is the creation of energy that is not only renewable but above all sustainable.

**The company has
adopted a development
strategy that constantly
implements sustainable
actions and practices.**



Chryssa Giannopoulou,
Sustainability Manager,
Enel Green Power Hellas

SUSTAINABILITY ACTIVITIES ALL OVER THE COUNTRY

Enel Green Power, through the "Creating Shared Value Model", fosters the sustainable development of local communities. Specific initiatives across the country, such as the reforestation of [Kastanologgos](#), the age-old wild chestnut forest in South Evia where 30.000 native plants are being strategically planted to restore its continuity, modern training programs like [Energy On the Go](#) and the digital platform of [PlayEnergy](#) as well as supporting the local producers are constantly activated. Last June, for example, we supported the Karystos Beekeeping Association's application procedure for the recognition of the local honey named "Kissouri" in the PDO-PGI-TSG of the EU as a product of Protected Designation of Origin (PDO).

We also make donations that meet the social and economic needs of local communities, such as hospital equipment during the first and second waves of the pandemic, and we include sporting activities in our efforts, thereby supporting the development of a sustainable tourism model in the areas we operate. This year's Bravo Sustainability Dialogue & Awards, the QualityNet Foundation awarded us in the «Society» category for last year's [mountain bike race](#), which was hosted at "Milia" wind farm in South Evia and organized in collaboration with the Greek Cycling Federation and the Cycling Association of Karystia. It was the first time in Greece that a Greek Mountain Bike Championship was held in a wind farm.

Finally, by adopting the "Sustainable Construction Site" model, we plan to embrace sustainable practices before the construction of every project, in order to firstly minimize the environmental footprint during the construction phase of renewable projects, and secondly to produce added social value for the local community.

For example, in the solar park "Vamvakies", in Agios Ioannis, Imathia, a 6,72kW stand alone PV plant was installed to cover the energy needs of the construction

site and to minimize the environmental footprint. We recycled 6.5 tons of industrial waste and 55 tons of excavation products and we minimized the use of plastic at the worksite by supplying all employees with reusable bottles. Approximately 500 pallets from the packaging of panels and inverters were donated to local shepherds for them to put on the hay of their animals and protect it from rotting. We also secured that 50% of the people involved in the project were people that live in the surrounding area. Our goal is to bring the local communities closer to all RES projects, highlighting the added value brought to their area by creating such installations.

**We plan to adopt
sustainable
practices before
the construction
of every project.**



The cups of the individual time trials of the first day. The ribbons of the medals are in the colors of the Greek flag, since this year, "Thysias" race was included in the program of the scheduled events for celebrating the 200th anniversary of the 1821 Greek War of Independence.



Student of the Primary School of Kalavryta is participating in one of the games of the educational program Energy on the Go.



Student of the Primary School of Kalavryta is participating in one of the games of the educational program Energy on the Go.

Panoramic view of Kalavryta area.



FOSTERING THE SUSTAINABLE GROWTH OF KALAVRYTA

The historic 43rd “Thysias” bike race in Achaia is the third cycling race hosted by Enel Green Power near one of its renewable projects. It was included in the program of the scheduled events of Western Greece for the celebration of the 200th anniversary of the 1821 Greek War of Independence and coincided with the celebration of the 50th anniversary of the founding of the Cycling Team of Patras in 1971.

One of the routes passed near “Lithos”, our 18.9 MW wind farm. The race was organized and run by the Cycling Team of Patras in collaboration with the local authorities from May 28 to 30; the cycling races were part of the national championship. More than 350 athletes took part in the three-day races, consisted of individual time trials, men’s classification and the “Gran-Fondo Thysias”, a unique route that started in Patras and ended in Kalavryta.

Through its support of this sporting event, Enel Green Power brought more publicity to the area and its natural beauty, enriched the tourist identity of Kalavryta, and promoted the village of Kerpini as an interesting destination, attracting more visitors, while at the same time brought the local community closer to its parks and Renewable Energy Sources. The race was supported on a broader level presenting, during the the official start of the race, two educational programs in classes of the Primary School of Kalavryta, in which 45 students participated. More specifically, the program Energy On the Go, which is part of our Corporate Social Responsibility plan, started in 2014, renewed in 2020 and approved by the Hellenic Ministry of Education & Religious Affairs was implemented, as well as a safe cycling seminar by a local cycling expert.

Through its support to this race as well as the organization of a variety of initiatives, Enel Green Power Hellas contributed to the following Global Sustainable Development Goals:



KALAVRYTA: A HISTORICAL PLACE

With a rich heritage of religious, historical and archaeological sights, stunning natural beauty, the renowned Odontotos rack railway, which has been described as the most spectacular railway line in the Balkans, and mountain trails for biking and running, Kalavryta, built at an altitude of about 700 meters, is a particularly popular destination in the Peloponnese.

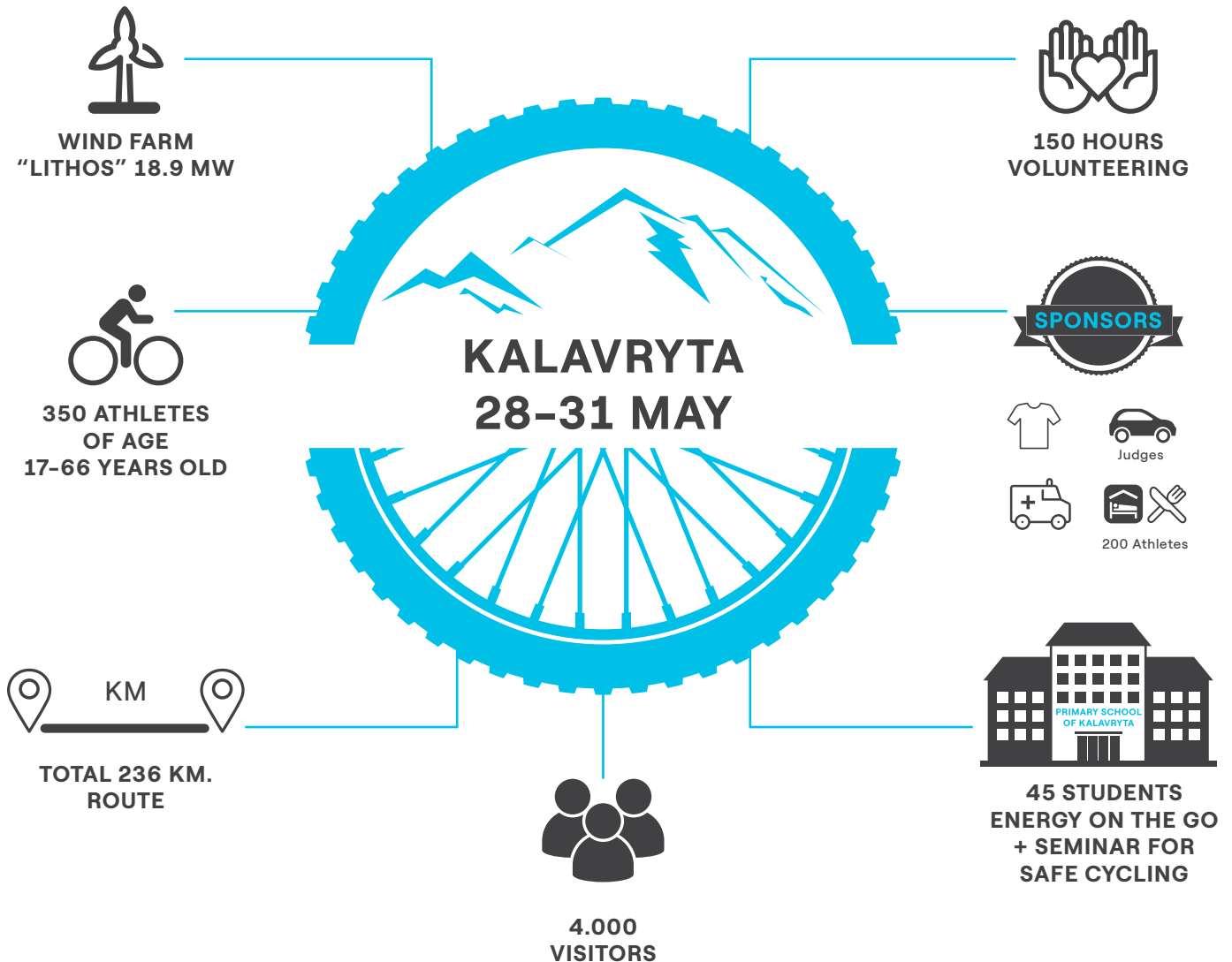
In this picturesque and historic town, where on December 13, 1943 the German army killed almost the entire male population over the age of 12, a traveler can visit the Vouraikos gorge, through which the Odontotos rack railway, Diakopto-Kalavryta,

passes. Also, the traveler can enjoy a guided tour at the mythical Mavroneri, the Cave of the Lakes with the successive terraced lakes that extend on three floors and make it unique in its kind worldwide, and the Holy Monastery of Mega Spilaio, which is built in an impressive setting at the entrance of a natural cave. The trip ends at the imposing Helmos, the Ski Center and Planitero, a unique landscape with walnuts, plane trees and rushing waters near the sources of the Aroanios river.

Before you leave, take with you local products such as feta and curd, local pasta and meat, honey, herbs and the famous rose syrup.

43rd

EDITION OF THE HISTORIC "THYSIAS" CYCLING RACE



**WE CREATE
SHARED VALUE
FOR THE LOCAL
COMMUNITIES**



Vasilis S. Diamantopoulos,

President of the Hellenic Cycling Federation

General Secretary of the Patras Cycling Club

THE SYMBOLISM OF THE RACE

The "Thysias" bike race is more than a race. It is a symbol that brings together the athletic spirit with the historical and cultural traditions of Patras, the Prefecture of Achaia and Greeks in general. The race was first organized in 1978 and since then it takes place regularly, except during very serious conditions (pandemic, adverse weather conditions).

The contribution of the private sector to events of this caliber is crucial. It is not feasible, for an amateur club to be able to undertake events at this level without annual state grants. Thanks to our club's effective management, active profile and background, we soon realized that state funding will become limited or even non-existent at some point in the future. Consequently, we searched for sponsors that would support the champions and the continuous improvement of the events, especially the "Thysias" bike race. Understanding the importance of collaborating with the private sector, partnered with it to gain benefits for its athletes and its actions alike.

[Our partnership with Enel Green Power](#) is of particular importance to us, in addition to the abovementioned reasons, we also share common goals. EGP, by producing energy from renewable sources such as wind, water, and sun, protects the environment from burning fossil fuels to generate electricity. The Cycling Team of Patras, by having as its key tool the bicycle, the most environmental friendly means of transportation, protects the environment from the pollutants of conventional vehicles.

**The contribution
of the private sector
to events of this
caliber is crucial.**



Efthymios Tzovolos,
Cycling coach

BICYCLE SAFETY

Bicycles are a modern and very environmental friendly means of transportation that can be used either around the city or nature adventures. The bike does not pollute the atmosphere at all, but rather improves our physical condition and consequently makes our life better. However, to be able to enjoy its benefits, we must treat it as a means of transportation and not as a toy. Therefore, we need to follow road traffic rules the utmost and respect road signs, as if we were driving a motor vehicle. Moreover, we have to carry the necessary cycling equipment, most importantly, the helmet, to move around safely.

I had the pleasure to discuss all these fundamentals with the students of the Primary School of Kalavrita, where I live, in the context of the simultaneous activities organized by Enel Green Power for the “Thysias” cycle tour. Our key message was “we protect ourselves and then we protect others”, I showcased to the children how to properly wear their helmets and how to position their bike, shared with them instructions for basic bicycle maintenance and taught them how to protect themselves when riding their bike, day or night, using photos as examples.

After all, road safety begins not only from safe cycling, but also from young children who are the citizens of the future. Citizens who depend on us to: 1) develop environmental awareness through targeted educational programs, such as Enel Green Power’s Energy On the Go and the digital platform [PlayEnergy](#); 2) learn how to protect themselves on the road, starting with the safe use of the bicycle.

Therefore, we need to follow road traffic rules the utmost and respect, as if we were driving a motor vehicle.

The cyclist, Giorgos Bouglas of the Kronos Cycling Club, delighted, following his win of the «Gran-Fondo Thysias», of a total distance of 102 kilometers.



The medal is awarded to the winner of Porto Leone Cycling Academy, Barbara Fasoi by John Papadimitriou, Head of Communications Europe, Enel Green Power