



Flat Rocks Wind Farm Stage 1 Construction Information Session

Enel Green Power
7 June 2023

Agenda



- 01** Introduction
- 02** Overview of project construction to date
- 03** What to expect for the remainder of the construction phase
- 04** Overview of the project's Community Engagement and Community Fund

Enel Green Power

World Leader for Renewables within the Enel Group

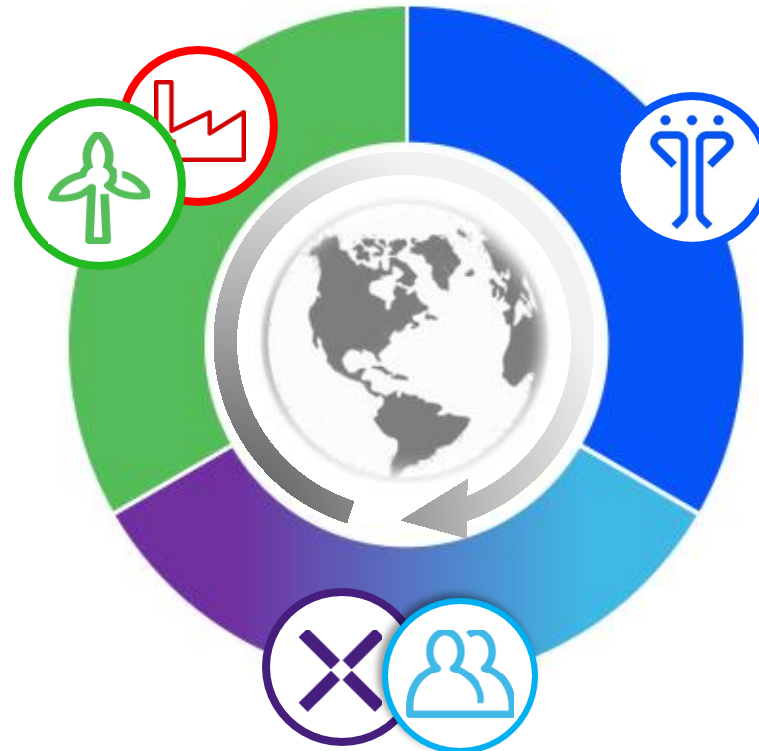


Enel Green Power and Thermal Generation

Accelerates a sustainable energy transition, increasing **renewables** capacity growth and **decarbonizing** our fleet

Enel X Global Retail

Enables the energy transition providing **innovative services** and **digital solutions** to customers and **system flexibility**



Global Infrastructure & Networks

Guarantees reliability and quality of service in the energy supply, through **efficient**, **resilient** and **digital** networks

Global Energy and Commodity Management

Optimizes the Group margin as a single portfolio, finding its **best balance**

Global e-Mobility

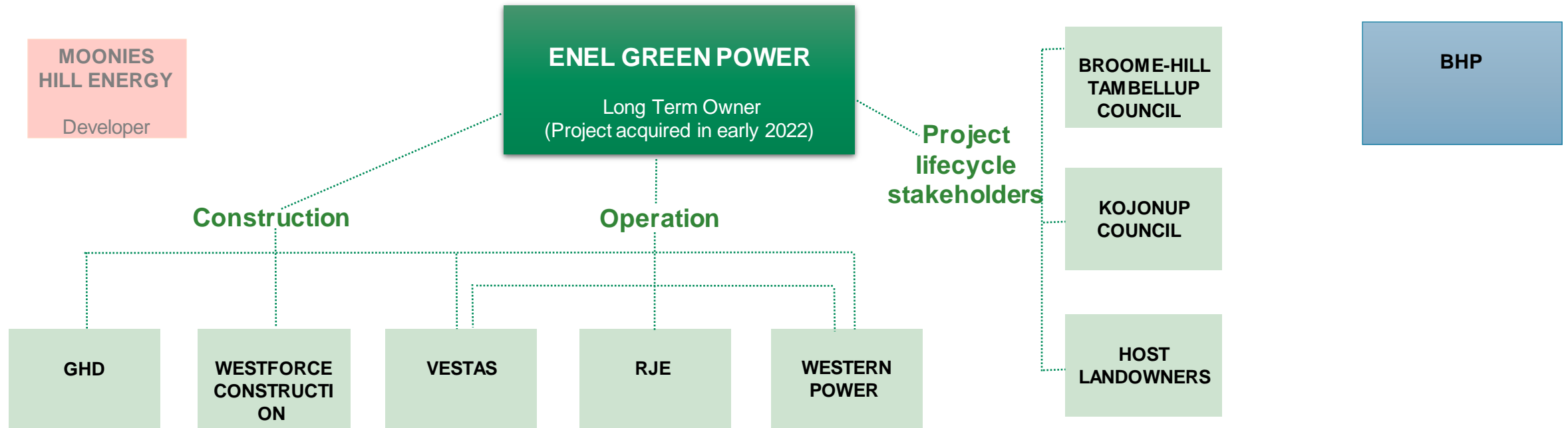
Increases mobility electrification and customer value by developing, managing and offering cutting-edge **e-Mobility solutions**

Who's who for the project

Major project and construction partners



FLAT ROCKS WIND FARM STAGE 1



Project Health and Safety

- # of man-hours - 120119.5
- # of First aid incidents – 4
- # of Medical Treatment – 0
- # of Lost Time Injuries - 0



Snapshot of Construction Stats

Peak of **48** local workers during civil construction:

- Klopper Contracting
- Coastal Cranes
- Great Southern Geotechs

Our contactors Klopper Earthworks and RJE have fully trained **4** local people with specific skills relevant to construction (now) and operations and maintenance (into the future).

FRWF supports **30+** local businesses providing goods and services to our workforce such as catering, accommodation, cleaning and hardware supplies.



Project Construction

Site preparation



Project Construction

Temporary site compound



Project Construction

Civil works



Project Construction

Turbine Foundation Preparation



Project Construction

Turbine Foundation Preparation



Project Construction

Turbine Foundation Preparation



Project Construction

Preparation for installation of electrical cabling



Project Construction

Substation and Operations and Maintenance Facility



Wind turbine components

Transportation to the Port of Bunbury



Wind turbine components

Unloading at Port of Bunbury



Wind turbine components

Storage at Port of Bunbury



Wind turbine components

Nacelle transport



What's next for construction



Approach to Community Engagement

Creating Shared Value (CSV) and Community Benefit Sharing: *Every EGP project comes with a detailed plan creating long-term shared value initiatives, delivered by collaborating with selected partners and local communities*

FRWF S1 Community Engagement:

- Appointment of Community Liaison Officer
- Opening of Community Information Centre in Kojonup
- Information sharing via monthly updates in local newspapers and project website
- School visits and turbine naming competition

FRWF S1 Community Benefit Sharing:

- Sponsored Kojonup Show, Tambellup Family Fun Day and Kojonup Talent Gala events
- Bush Tucker Garden in Kojonup
- Kojonup District High School Bus
- Established a Community Fund



Community Fund

Proactively benefit sharing with the local community



The Flat Rocks Wind Farm S1 Community Fund comprises of **\$ 2,250,000** for the life of the project (\$75,000 per year) across the Shires of Broomehill-Tambellup and Kojonup.

The aim is to support non-profit organisations in and around the FRWF area by funding projects that benefit the broader community.

A **Fund Committee** of 5 members has been appointed to evaluate successful applications twice a year.

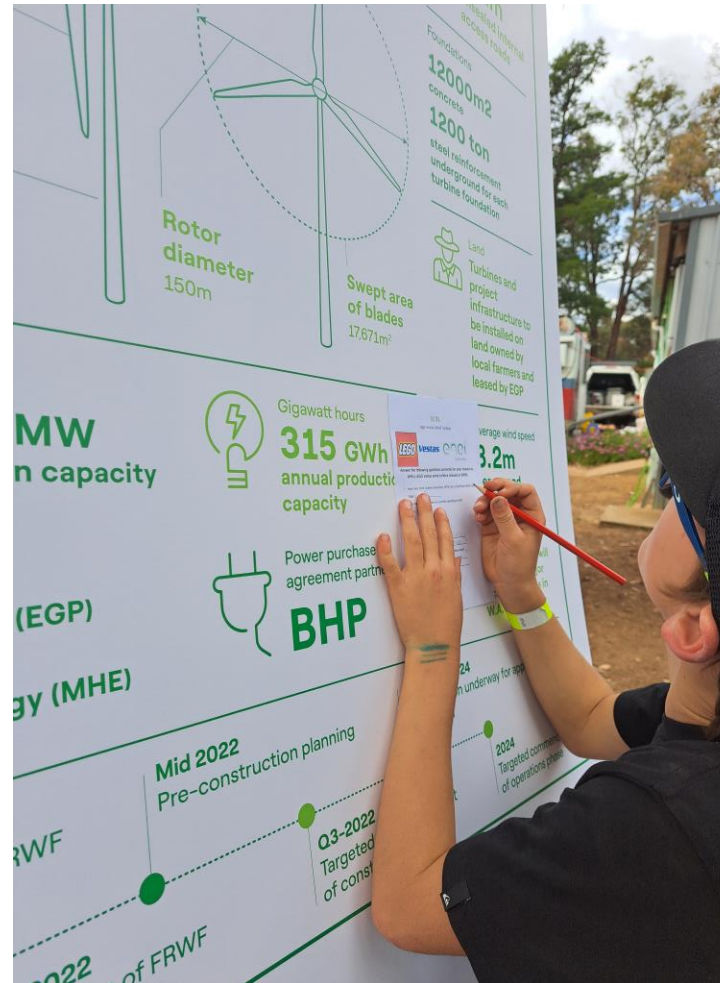
The fund will be open for applications over two rounds:

Round 1: *1st May – 16th Jun 2023* (successful applications awarded in June)

Round 2: *1st Sep – 31st Oct 2023* (successful applications awarded in November)



Community engagement activities



Community engagement activities





Questions & Thanks

Olivia Thorn

Community Liaison Officer FRWF S1

T: 0459 359 399

olivia.thorn@enel.com

flatrockswindfarm@enel.com

www.enelgreenpower.com/our-projects/in-development/flat-rocks-wind-project