



**Thursday, June 28, 2018**  
 PLAN OF THE DAY (PoD)

**HillTopper Wind Farm**  
 74 WTG's  
 GE 2.50 MW  
 185 MW Capacity



Substantial Completion

Wednesday, October 31, 2018

COD

Saturday, December 1, 2018

**TODAY'S WEATHER FORECAST**

Conditions	Partly Cloudy	Wind Direction	WNW	Wind Speed	5-10 mph	Dew Point	70%	Temperature	86 °F	65 °F	Humidity	81%	Precipitation	0%
------------	---------------	----------------	-----	------------	----------	-----------	-----	-------------	-------	-------	----------	-----	---------------	----

**DAILY ROAD CLOSURES/BLOCKAGES**

Please help keep our guys safe and watch speeds in marked construction areas.

**Thursday - 28 JUNE 18 Road Closures/Blockages**

Road Closure for Cement Stabilization will take place on 300th from 1600th to the POI.  
 Road Closure For Culvert Replacements will be #44, #45, & #48 on 1039th from 700th (CH 10) to 950th (CH 12)

**Friday - 29 JUNE 18 Road Closures/Blockages**

Road Closure for Cement Stabilization will take place on 300th from 1600th to the POI.  
 Road Closure For Culvert Replacements will be #44, #45, & #48 on 1039th from 700th (CH 10) to 950th (CH 12)

**Saturday - 30 JUNE 18 Road Closures/Blockages**

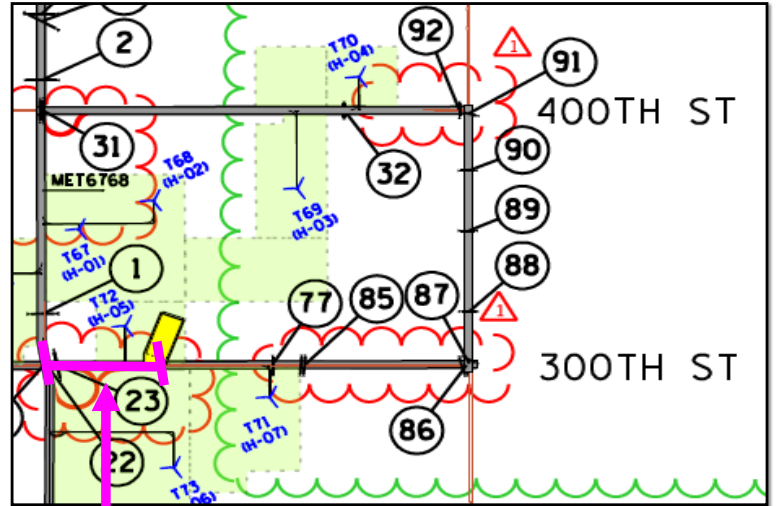
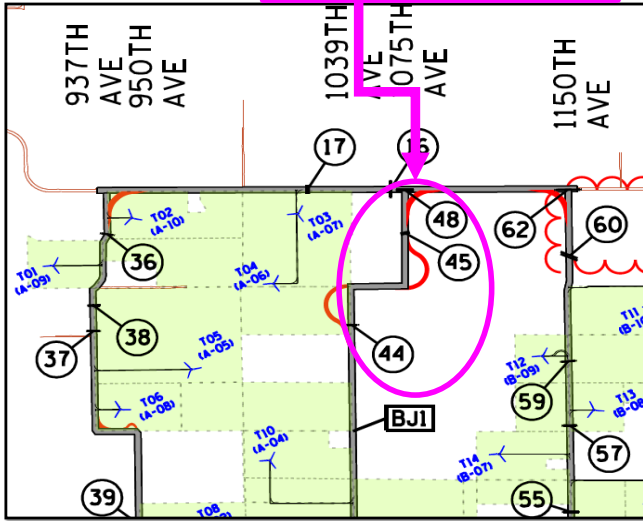
Road Closure for Cement Stabilization will take place on 300th from 1600th to the POI.  
 Road Closure For Culvert Replacements will be #44, #45, & #48 on 1039th from 700th (CH 10) to 950th (CH 12)

Extended Road Closure for Cement Stabilization will take place on 300th from 1600th to the POI. This closure will extend through Tuesday 7/7.

**Extended Road Closure Notice**

Extended Road Closure For Culvert Replacements will be #44, #45, & #48 on 1039th from 700th (CH 10) to 950th (CH 12). This Road Closure Will Extend Through Saturday 7/3.

Extended Road Closure For Culvert Replacements will be #44, #45, & #48 on 1039th from 700th (CH 10) to 950th (CH 12). This Road Closure Will Extend Through Saturday 7/3.



Extended Road Closure for Cement Stabilization will take place on 300th from 1600th to the POI. This closure will extend through Tuesday 7/7.

**Thursday 6/28**

Extended Road Closure For Road Stabilization will be on 300th from 1600th to the POI.  
 This Road Closure Will Extend Through Tuesday 7/7.

**Friday 6/29**

Extended Road Closure For Culvert Replacements will be #44, #45, & #48 on 1039th from 700th (CH 10) to 950th (CH 12)  
 This Road Closure Will Extend Through Saturday 7/3.

Please contact the following people if there are any questions.  
 Daniel Sheehan - dsheehan@swiftcurrentenergy.com  
 Antonio Bombaci - antonio.bombaci@enel.com