



Friday, June 29, 2018
PLAN OF THE DAY (PoD)

HillTopper Wind Farm
74 WTC's
GE 2.50 MW
185 MW Capacity



Substantial Completion	Wednesday, October 31, 2018
COD	Saturday, December 1, 2018

TODAY'S WEATHER FORECAST

Conditions	Sunny	Wind Direction	SE	Wind Speed	5-10 mph	Dew Point	71%	Temperature	89 °F 74 °F	Humidity	71%	Precipitation	20%
------------	-------	----------------	----	------------	----------	-----------	-----	-------------	-------------	----------	-----	---------------	-----

DAILY ROAD CLOSURES/BLOCKAGES

Please help keep our guys safe and watch speeds in marked construction areas.

Friday - 29JUNE18 Road Closures/Blockages

Road Closure for Cement Stabilization will take place on 300th from 1600th to the POI.
Road Closure For Asphalt Paving will be on CH 12 from 937th to 1150th.
Road Closure For Culvert Replacements will be #44, #45, & #48 on 1039th from 700th (CH 10) to 950th (CH 12)

Saturday - 30JUNE18 Road Closures/Blockages

Road Closure for Cement Stabilization will take place on 300th from 1600th to the POI.
Road Closure For Asphalt Paving will be on CH 12 from 937th to 1150th.
Road Closure For Culvert Replacements will be #44, #45, & #48 on 1039th from 700th (CH 10) to 950th (CH 12)

Sunday - 1JUL18 Road Closures/Blockages

Road Closure for Cement Stabilization will take place on 300th from 1600th to the POI.
Road Closure For Asphalt Paving will be on CH 12 from 937th to 1150th.
Road Closure For Culvert Replacements will be #44, #45, & #48 on 1039th from 700th (CH 10) to 950th (CH 12)

Extended Road Closure for Cement Stabilization will take place on 300th from 1600th to the POI. This closure will extend through Tuesday 7/7.

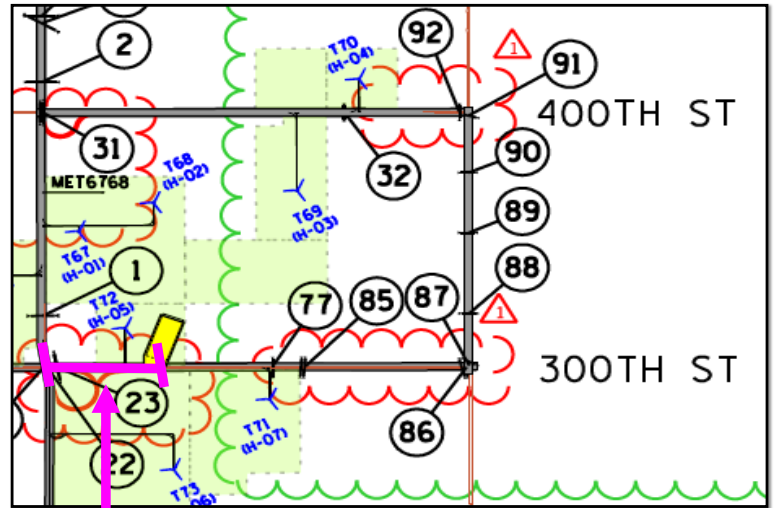
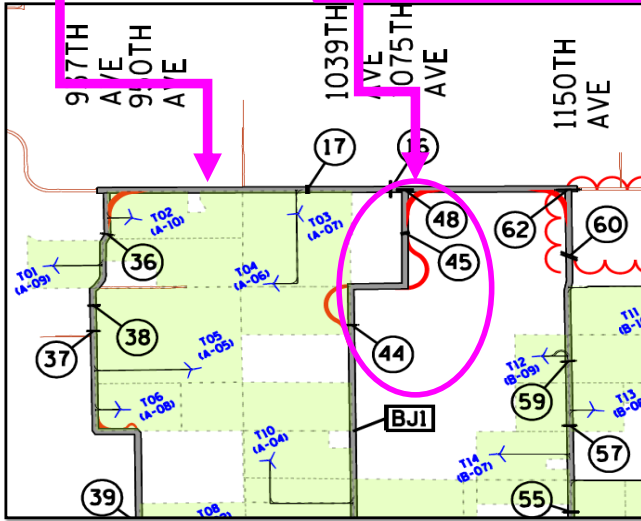
Extended Road Closure Notice

Extended Road Closure For Asphalt Paving will be on CH 12 from 937th to 1150th. This Road Closure Will Extend Through Tuesday 7/3.

Extended Road Closure For Culvert Replacements will be #44, #45, & #48 on 1039th from 700th (CH 10) to 950th (CH 12). This Road Closure Will Extend Through Saturday 7/3.

Extended Road Closure For Asphalt Paving will be on CH 12 from 937th to 1150th. This Road Closure Will Extend Through Tuesday 7/3.

Extended Road Closure For Culvert Replacements will be #44, #45, & #48 on 1039th from 700th (CH 10) to 950th (CH 12). This Road Closure Will Extend Through Saturday 7/3.



Extended Road Closure for Cement Stabilization will take place on 300th from 1600th to the POI. This closure will extend through Tuesday 7/7.

Friday 6/29
Extended Road Closure For Culvert Replacements will be #44, #45, & #48 on 1039th from 700th (CH 10) to 950th (CH 12)
This Road Closure Will Extend Through Tuesday 7/3.

Extended Road Closure For Road Stabilization will be on 300th from 1600th to the POI.
This Road Closure Will Extend Through Monday 7/9.

Extended Road Closure For Asphalt Paving will be on CH 12 from 937th to 1150th.
This Road Closure Will Extend Through Tuesday 7/3.

Please contact the following people if there are any questions.
Daniel Sheehan - dsheehan@swiftcurrentenergy.com
Antonio Bombaci - antonio.bombaci@enel.com